



THE SCHOOL DISTRICT OF PHILADELPHIA

# THE WORKSHOP SCHOOL

## 2021-22 SCHOOL PROGRESS REPORT ON EDUCATION AND EQUITY

School Code | 8560 Sector | District Network | Innovation  
 Principal Name | Mrs Ayanna Walker  
 Address | 221 S Hanson St  
 Phone | 215-400-7730 Website | workshopsschool.philasd.org/  
 Report Type | High School Grades in Report | 9-12  
 Admissions Category | Citywide  
 Turnaround Model | N/A  
 Receives K8 Report | No  
 Oct 1 Enrollment | 213

### Student Enrollment and Demographics



- 0.9% American Indian / Alaskan Native
- 0.9% Asian
- 89.7% Black / African American
- 3.3% Hispanic / Latino
- 4.2% Multi Racial / Other
- 0.0% Native Hawaiian / Pacific Islander
- 0.9% White

222

Total Number of Students Served for 10+ Days Over the Year

21.1%

% Students with IEPs

4.2%

% English Learners

83.1%

% Economically Disadvantaged

### Student Attendance

58.6%

% Students Attending at Least 95% of Instructional Days

78.4%

% Students Attending at Least 90% of Instructional Days

Score Level	Performance	Improvement	Level
<p><b>Level 3</b></p> <p><b>Performance</b></p> <p>At or Above Target in <b>40.0 %</b> 2 out of 5 Eligible Metrics</p> <p><b>Improvement</b></p> <p>Insufficient Data for Score</p>	<p><b>American Indian / Alaskan Native</b></p> <p>Insufficient Data for Score</p>		
	<p><b>Asian</b></p> <p>Insufficient Data for Score</p>		
	<p><b>Black / African American</b></p> <p>Insufficient Data for Score</p>		
<p><b>Goal Performance (All Students)</b></p> <p><b>GOAL 4   % of 11th Graders Proficient on Algebra, Biology, &amp; Literature Keystones</b></p> <p>Score: <b>0.0 %</b></p> <p>-31.7 pts from 2021-2022 target</p> <p>NOT MEETING no data prior year</p>	<p><b>Hispanic / Latino</b></p> <p>Insufficient Data for Score</p>		
	<p><b>Multi Racial / Other</b></p> <p>Insufficient Data for Score</p>		
	<p><b>Native Hawaiian / Pacific Islander</b></p> <p>Insufficient Data for Score</p>		
	<p><b>White</b></p> <p>Insufficient Data for Score</p>		
	<p><b>English Learners</b></p> <p>Insufficient Data for Score</p>		
<p><b>GOAL 5   % of 12th Grade Career and Technical Education (CTE) Students Meeting Industry Standards</b></p> <p><b>Insufficient Sample</b></p>	<p><b>Students with IEPs</b></p> <p>Insufficient Data for Score</p>		
	<p><b>Economically Disadvantaged</b></p> <p>Insufficient Data for Score</p>		
	<p><b>Meeting Target</b></p> <p><b>Not Meeting Target</b></p>		

# College & Career: Every Student Graduates Ready for College and Careers

## Goal 4 - Keystone Proficiency

School Code | 8560 School Name | The Workshop School

**Goal 4:** The percentage of students who are proficient on all three state high school assessments (Algebra, Literature, and Biology) by the end of their 11th grade year will grow from 26.1% in August 2019 to 52.0% by August 2026.

### % of 11th Graders Proficient on Algebra, Biology, & Literature Keystones

**All Students**, 42 students

**Score: 0.0 %**



**2021-2022 Target: 31.7 %**

-31.7 pts from target

**2025-2026 Goal: 52.0 %**

-52.0 pts from target

NOT MEETING

no data prior year



- Meeting Target
- Not Meeting Target

**American Indian / Alaskan Native**

Insufficient Sample

**Asian**

Insufficient Sample

**Black / African American**, 36 students

**Score: 0.0 %**

-31.7 pts from target

NOT MEETING

no data prior year



**Hispanic / Latino**

Insufficient Sample

**Multi Racial / Other**

Insufficient Sample

**Native Hawaiian / Pacific Islander**

Insufficient Sample

**White**

Insufficient Sample

**English Learners**

Insufficient Sample

**Students with IEPs**

Insufficient Sample

**Economically Disadvantaged**, 35 students

**Score: 0.0 %**

-31.7 pts from target

NOT MEETING

no data prior year



# College & Career: Every Student Graduates Ready for College and Careers

## Goal 5 - Career and Technical Education

## Graduation and College Readiness

School Code | 8560 School Name | The Workshop School

**Goal 5:** The percentage of Career and Technical Education (CTE) students who pass an industry standards-based competency assessment by the end of their 12th grade year will grow from 54.5% in August 2019 to 80.0% in August 2026.

### % of 12th Grade CTE Students Meeting Industry Standards

#### All Students

Insufficient Sample

### AP, IB, or Dual Enrollment Course Metrics

0.0 %

*% of Students Meeting Standard on AP Exam, on IB Exam, or in Dual Enrollment Course by End of 12th Grade*

0.0 %

*% of Students Participating in but Not Meeting Standard on AP Exam, IB Exam, or Dual Enrollment Course by the End of 12th Grade*

100.0 %

*% of Students Not Participating in AP Exam, IB Exam, or Dual Enrollment Course by the End of 12th Grade*

### Other Key Metrics

94.1 %

*Ninth-Grade On-Track Rate*

35.7 %

*First-Fall Matriculation*

61.4 %

*% of Students Completing the FAFSA by End of 12th Grade*

- Meeting Target
- Not Meeting Target

# College & Career: Every Student Graduates Ready for College and Careers

## Graduation and College Readiness

School Code | 8560 School Name | The Workshop School

### Four-Year Cohort Graduation Rate

All Students, 53 students

Score: 77.4 %



2021-2022 Target: 87.7 %

-10.3 pts from target

2025-2026 Goal: 90.0 %

-12.6 pts from target

NOT MEETING

no data prior year



- Meeting Target
- Not Meeting Target

American Indian / Alaskan Native

Insufficient Sample

Asian

Insufficient Sample

Black / African American, 46 students

Score: 76.1 %

-11.6 pts from target

NOT MEETING

no data prior year



Hispanic / Latino

Insufficient Sample

Multi Racial / Other

Insufficient Sample

Native Hawaiian / Pacific Islander

Insufficient Sample

White

Insufficient Sample

English Learners

Insufficient Sample

Students with IEPs

Insufficient Sample

Economically Disadvantaged, 47 students

Score: 76.6 %

-11.1 pts from target

NOT MEETING

no data prior year



# College & Career: Every Student Graduates Ready for College and Careers

## Graduation and College Readiness

School Code | 8560 School Name | The Workshop School

### Four-Year Cohort Drop-Out Rate

#### All Students

9 out of 53 students

Score: 17.0%

#### American Indian / Alaskan Native

Insufficient Sample

#### Asian

Insufficient Sample

#### Black / African American

8 out of 46 students

Score: 17.4%

#### Hispanic / Latino

Insufficient Sample

#### Multi Racial / Other

Insufficient Sample

#### Native Hawaiian / Pacific Islander

Insufficient Sample

#### White

Insufficient Sample

#### English Learners

Insufficient Sample

#### Students with IEPs

Insufficient Sample

#### Economically Disadvantaged

9 out of 47 students

Score: 19.2%

### Four-Year Cohort Continuation Rate

#### All Students

3 out of 53 students

Score: 5.7%

#### American Indian / Alaskan Native

Insufficient Sample

#### Asian

Insufficient Sample

#### Black / African American

3 out of 46 students

Score: 6.5%

#### Hispanic / Latino

Insufficient Sample

#### Multi Racial / Other

Insufficient Sample

#### Native Hawaiian / Pacific Islander

Insufficient Sample

#### White

Insufficient Sample

#### English Learners

Insufficient Sample

#### Students with IEPs

Insufficient Sample

#### Economically Disadvantaged

2 out of 47 students

Score: 4.3%

# Climate, Culture & Opportunity

## Guardrail 1 - Welcoming and Supportive Schools

School Code | 8560 School Name | The Workshop School

**Guardrail 1:** Every school will be a safe, welcoming and healthy place where our students, staff and community want to be and learn each day. This means that our schools will be: 1) environmentally safe and clean; and 2) spaces with inclusive climates that provide students with access to robust social, emotional, and mental health supports.

School Climate Score	School Climate Survey		
Insufficient Sample	Insufficient Sample <i>Student Rating</i>	Insufficient Sample <i>Parent Rating</i>	4.9/10 <i>Teacher Rating</i>
School Instruction Score	School Instruction Survey		
Insufficient Sample	Insufficient Sample <i>Student Rating</i>	Insufficient Sample <i>Parent Rating</i>	7.0/10 <i>Teacher Rating</i>

- Meeting Target
- Not Meeting Target



Yes

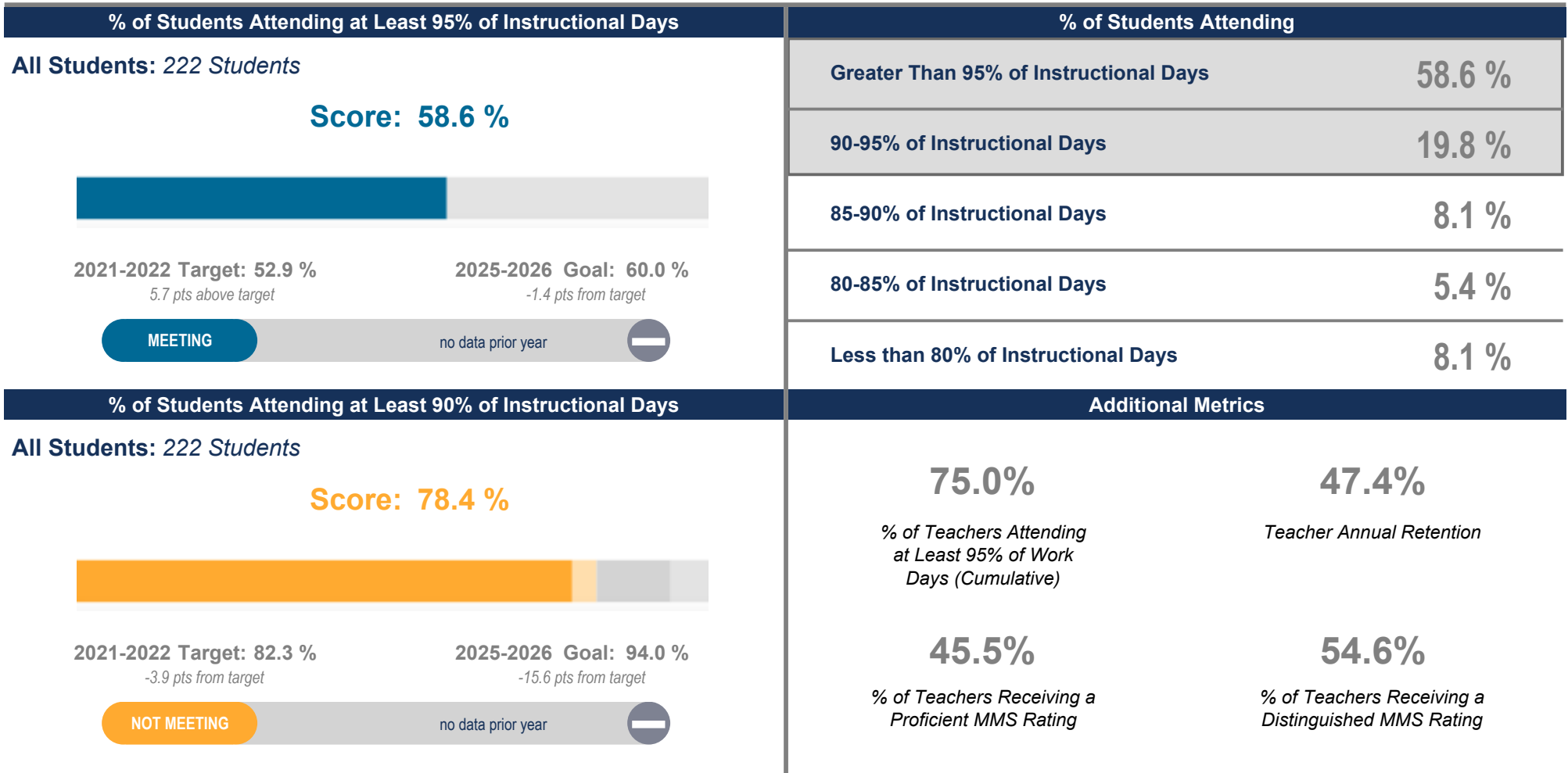
School Has at Least 2 Behavioral/Mental Health Support FTEs per 500 Students

# Climate, Culture & Opportunity

## Guardrail 1 - Welcoming and Supportive Schools

School Code | 8560 School Name | The Workshop School

**Guardrail 1:** Every school will be a safe, welcoming and healthy place where our students, staff and community want to be and learn each day. This means that our schools will be: 1) environmentally safe and clean; and 2) spaces with inclusive climates that provide students with access to robust social, emotional, and mental health supports.



- Meeting Target
- Not Meeting Target

# Climate, Culture & Opportunity

## Guardrail 2 - Enriching and Well-rounded School Experiences

## Guardrail 3 - Partnering with Parents / Family Members

School Code | 8560 School Name | The Workshop School

**Guardrail 2:** Every student will have a well-rounded education with co-curricular opportunities, including arts and athletics, integrated into the school experience.

**Guardrail 3:** Every parent and guardian will be welcomed and encouraged to be partners in their child's school community.

### % of Students Participating in Co-Curricular / Athletics Activities

### School Relationship Score

*% of Students  
Participating in Co-  
Curricular / Athletics  
Activities*

**Data Unavailable**

**Insufficient Sample**

### Additional Metrics



**Yes**

*School Has a SAC/Parent Advisory Group*



**Yes**

*School Has a SAC/Parent Advisory Group That Meets Regularly*



**5**

*Number of SAC/Parent Advisory Group Meetings*

- Meeting Target
- Not Meeting Target



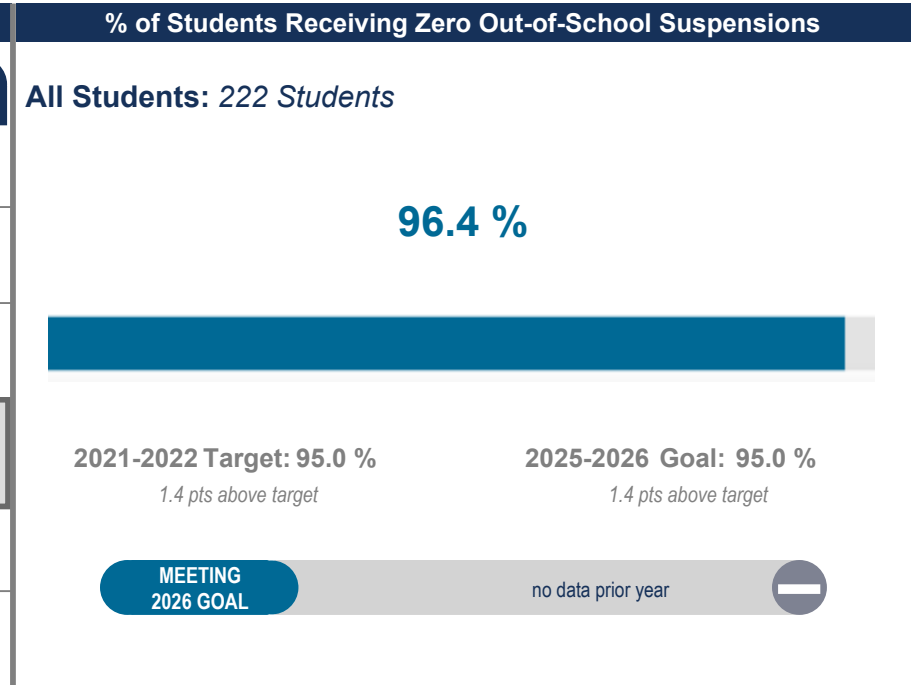
# Climate, Culture & Opportunity

## Guardrail 4 - Addressing Racist Practices

School Code | 8560 School Name | The Workshop School

**Guardrail 4:** Our students' potential will not be limited by practices that perpetuate systemic racism and hinder student achievement.

Suspension Disproportionality		
	% of Enrollment (Total Enrollment)	% of Suspensions Given to Each Subgroup
All Students	(213)	
American Indian / Alaskan Native	0.9 % (2)	0.0 %
Asian	0.9 % (2)	0.0 %
Black / African American	89.7 % (191)	88.9 %
Hispanic / Latino	3.3 % (7)	0.0 %
Multi Racial / Other	4.2 % (9)	11.1 %
Native Hawaiian / Pacific Islander	0.0 % (0)	0.0 %
White	0.9 % (2)	0.0 %
English Learners	4.2 % (9)	0.0 %
Students with IEPs	21.1 % (45)	22.2 %
Economically Disadvantaged	83.1 % (177)	77.8 %



### Disproportionality in AP, IB, and Dual Enrollment Courses

All Students	Black / African American	Hispanic / Latino
0.0 %	0.0 %	0.0 %

- Meeting Target
- Not Meeting Target